

ENGINE CONTROL, FUEL & EXHAUST SYSTEMS

SECTION **FE**

CONTENTS

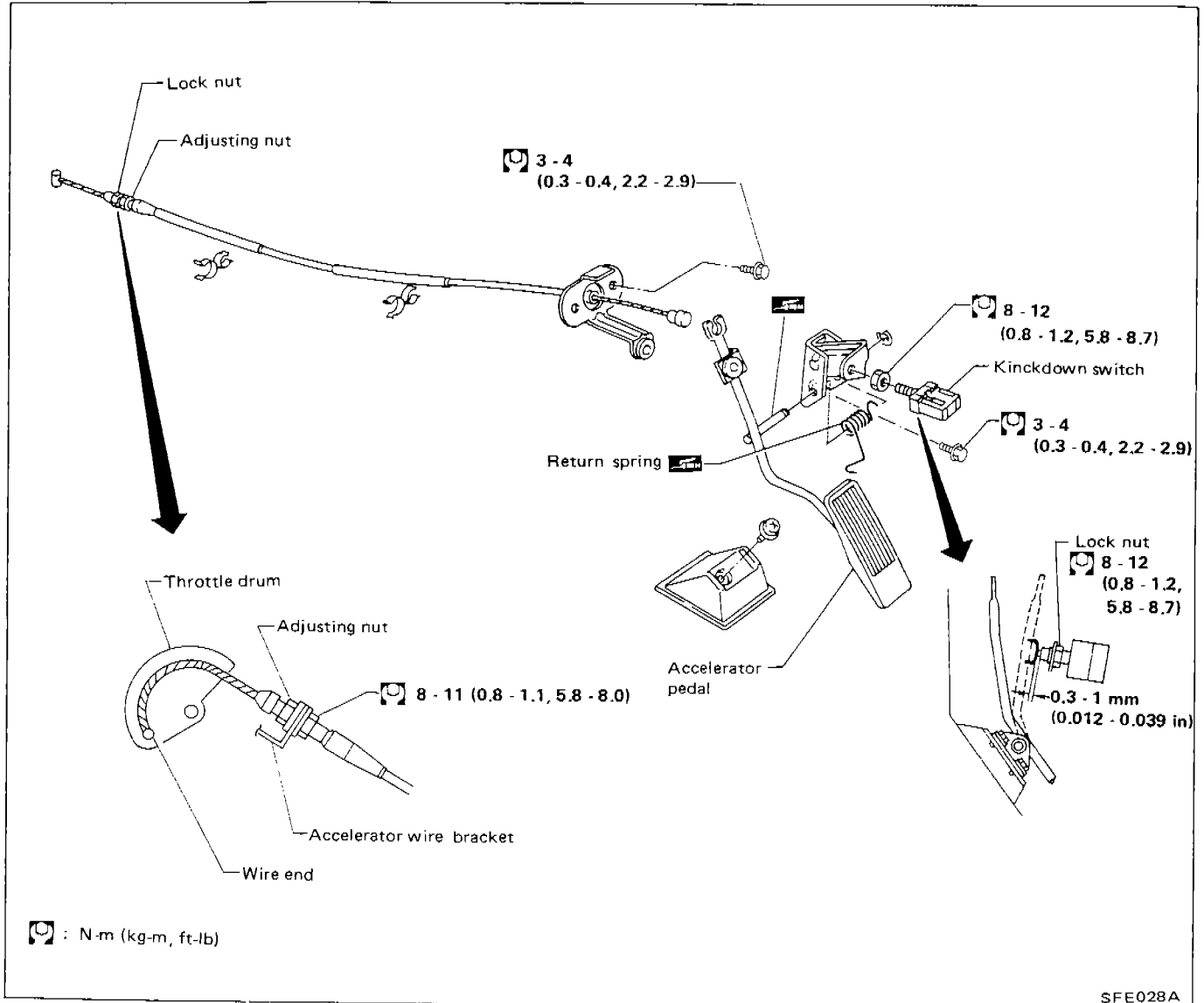
| | |
|-----------------------------|------|
| ENGINE CONTROL SYSTEM | FE-2 |
| FUEL SYSTEM | FE-3 |
| EXHAUST SYSTEM | FE-4 |

FE

ENGINE CONTROL SYSTEM

Accelerator Control System

- When removing accelerator wire, make a mark to indicate lock nut's initial position.
- Check that throttle valve fully opens when accelerator pedal is fully depressed and that it returns to idle position when pedal is released.
- Adjust accelerator wire according to the following procedure.
Tighten "adjusting nut" until "throttle drum" starts to move.
From that position turn back "adjusting nut" 1.5 to 2 turns, and fasten it with a lock nut.
- Check accelerator control parts for improper contact with any adjacent parts.
- When connecting accelerator wire, be careful not to twist or scratch its inner wire.



FUEL SYSTEM

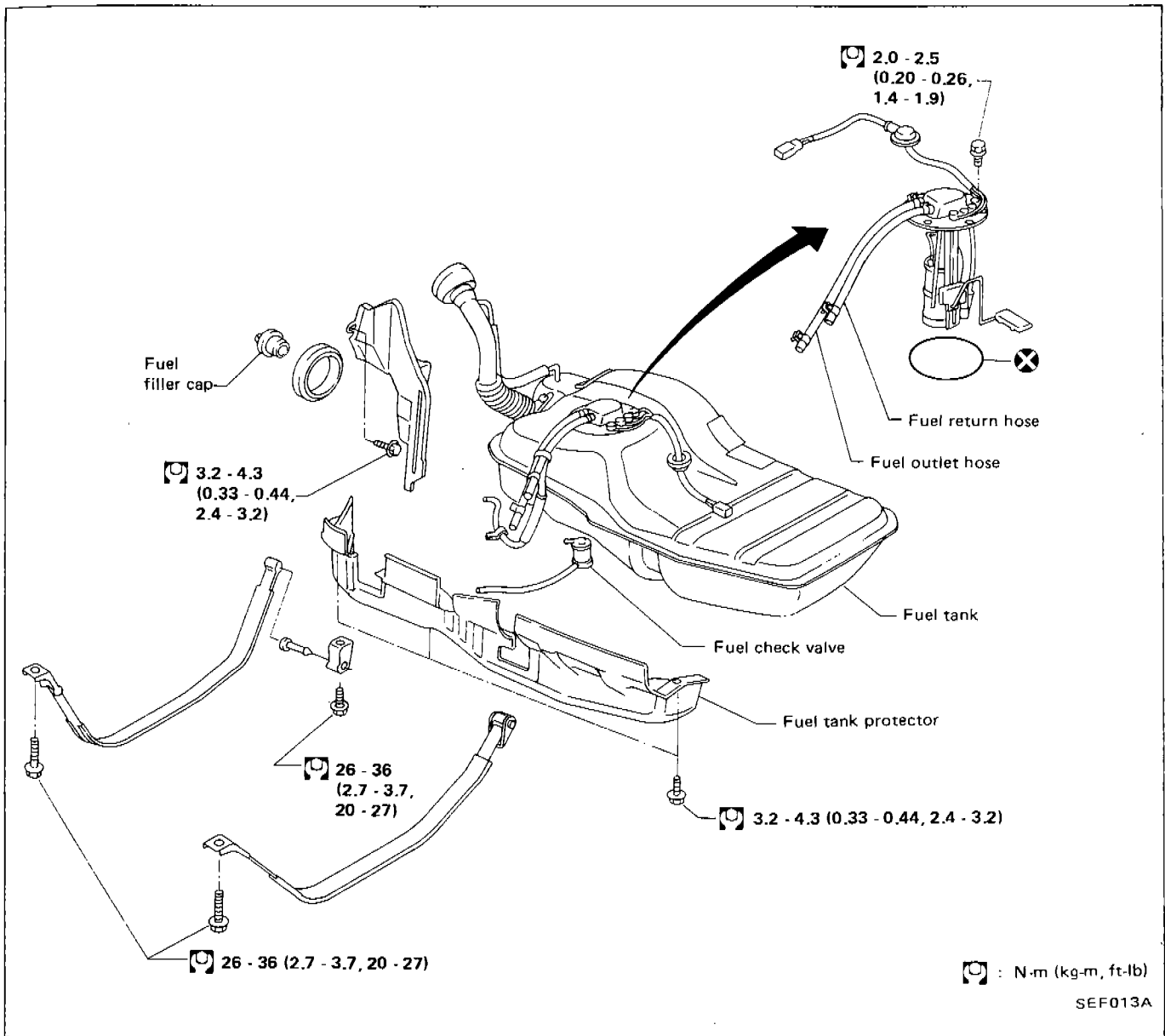
WARNING:

When replacing fuel line parts, be sure to observe the following:

- Put a "CAUTION: INFLAMMABLE" sign in workshop.
- Do not smoke while servicing fuel system. Keep open flames and sparks away from work area.
- Be sure to disconnect battery ground cable before conducting operations.
- Put drained fuel in an explosion-proof container and put lid on securely.

CAUTION:

- For electric fuel pump model, before disconnecting fuel hose, release fuel pressure from fuel line. Refer to "Changing Fuel Filter" in MA section.
- Do not disconnect any fuel line unless absolutely necessary.
- Plug hose and pipe openings to prevent entry of dust or dirt.
- Always replace O-ring and clamps with new ones.
- Do not kink or twist hose and tube when they are installed.
- Do not tighten hose clamps excessively to avoid damaging hoses.
- When installing fuel check valve, be careful of its designated direction. (Refer to section EF & EC.)
- Run engine and check for leaks at connections.

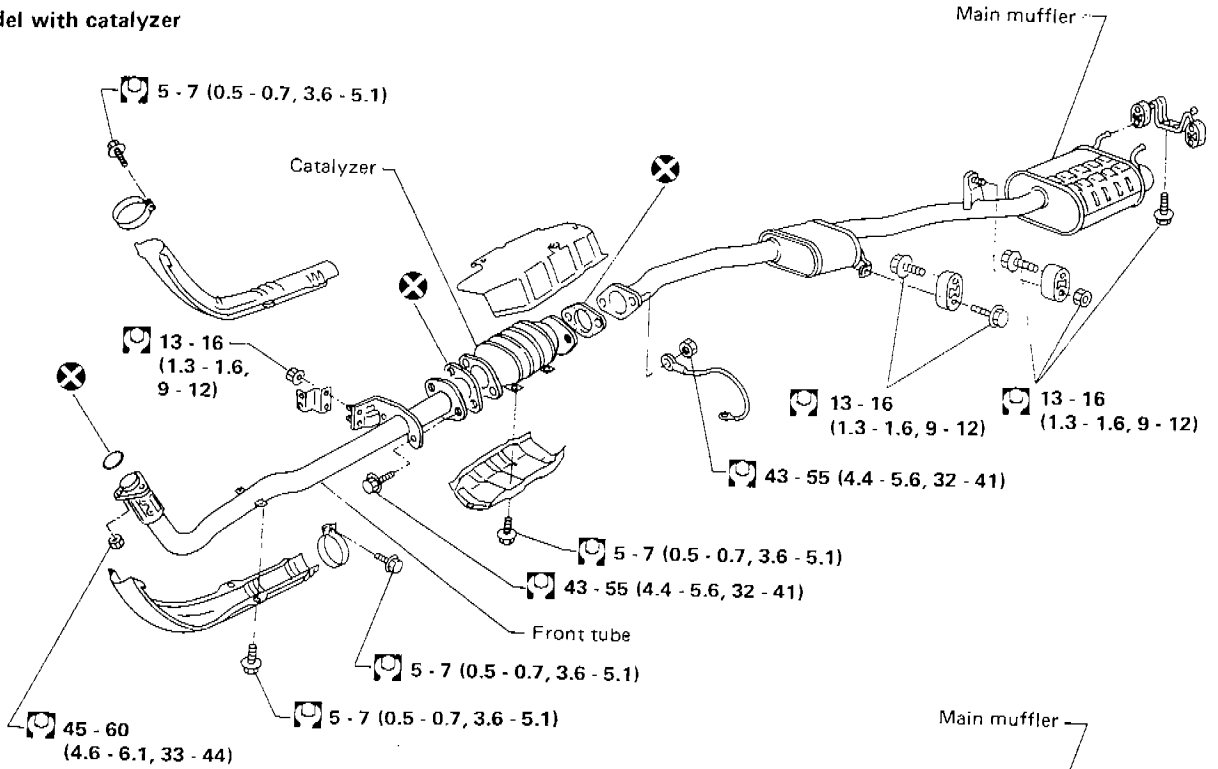


EXHAUST SYSTEM

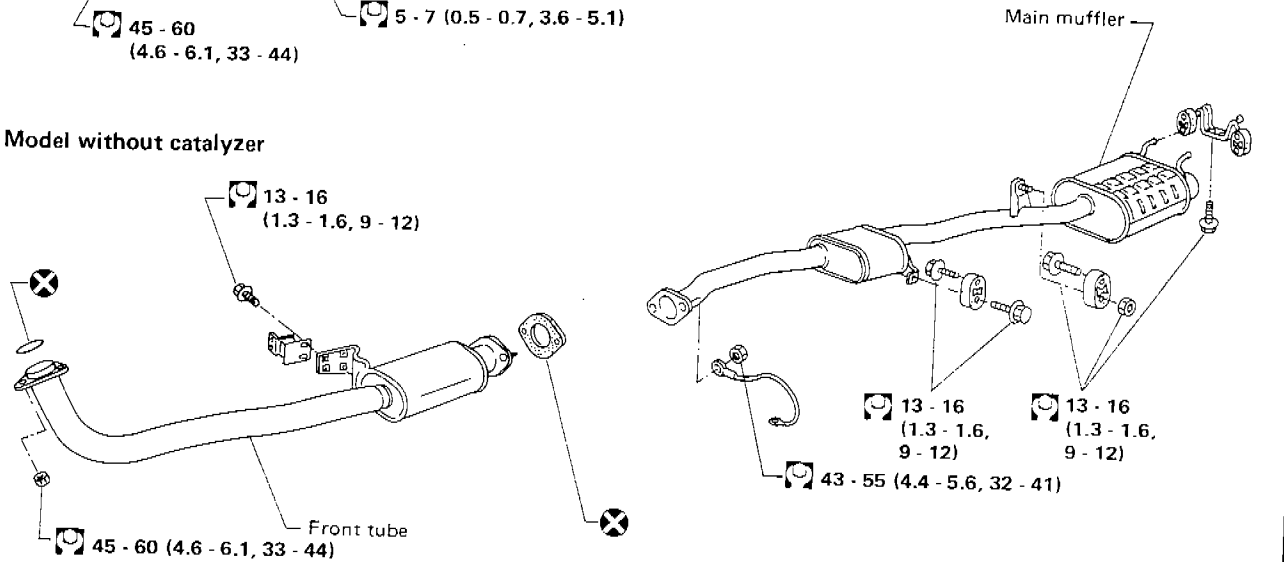
CAUTION:

- Always replace exhaust gaskets with new ones when disassembling.
- Check all tube connections for exhaust gas leaks, and entire system for unusual noises, with engine running.
- After installation, check that mounting brackets and mounting insulator are free from undue stress. If any of above parts are not installed properly, excessive noise or vibration may be transmitted to vehicle body.

Model with catalyzer



Model without catalyzer



: N·m (kg·m, ft·lb)

SFE182A